

Key Stage 1

Information for Parents

Autumn 2015

Year 1 Oak and Year 2 Chestnut



Housekeeping.

Every day your child needs to bring;

- **School book bag** with reading record book and reading book
- **Money** (termly/weekly) handed to Teachers or Teaching Assistants
- **Sun hat** in warm weather
- **Named PE kit**
- **Toys**-Children can bring in toys but they must be able to fit in their drawer and not be breakable.



Water bottles to be left in school in the week



Transition for Year 1

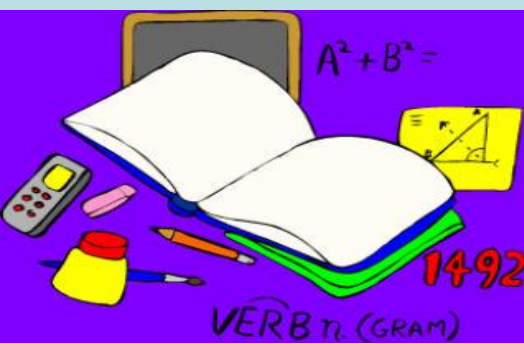
- Play based approach.
- Very similar to Reception.
- As the terms progress this will be limited and the children will begin to work more **formally**.



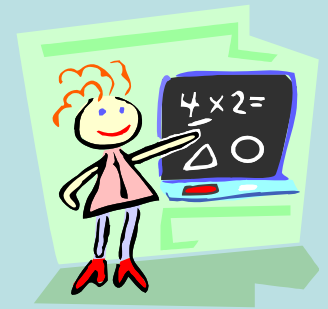
Early Work

- Children should come into school and start their Early Work at 8:40am.
- Year 2 children should come in independently from Term 1.
- At present, we are happy for parents of Year 1 children to come in and settle your child in the morning. By Term 2 we encourage independence and children are to be dropped off at the cloakroom.
- Register will be taken at 8.50am

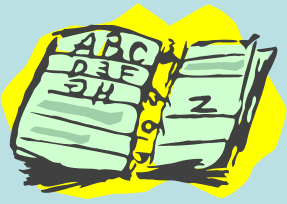




Numeracy



- Daily Numeracy lessons.
- Children will be **grouped** for daily numeracy lessons.
- The teaching groups will **not** remain static.
- Maths **challenges** to extend learning.
- Year 1 children will be given Maths homework at a later date.
- Year 2 will be given homework starting this Friday.



Literacy

Literacy includes speaking, listening, reading and writing.

- **Daily Literacy lesson**

Children are **grouped** for Literacy lessons. Not fixed groups.

Fun- Lots of speaking and listening activities including drama, role play and hot seating.

- Year 1 children will get Literacy homework in the form of Talk to Write later in the term.

- **Linked with Phonics**



Phonics



- This is how we teach children to read and write. Phonics focuses on securing word recognition skills as these are essential for children to read and spell words accurately.
- **Daily Phonics sessions**
- Phonics Play scheme- online resources.
- There will be a Phonics screening in June.

Spellings

- Your child will have spelling homework linked with the Phonics work they will be doing the following week.
- The homework will be given out on a **Friday** and is to be completed by **Monday**.
- Most children will have a spelling test on **Fridays**.

Reading

- *Children will read in a group led by a teacher on a weekly basis in **Guided Reading**.
- *Children will also be read with by staff and volunteers on an individual basis.
- *Books will be changed regularly: either on a **Monday** and a **Wednesday** or a **Tuesday** and a **Thursday**.
- *However if your child would like to change their book **sooner** than this then please let us know, as this can be done as required.
- *Access to the library.

Reading is the most important thing you can do at home with your child!

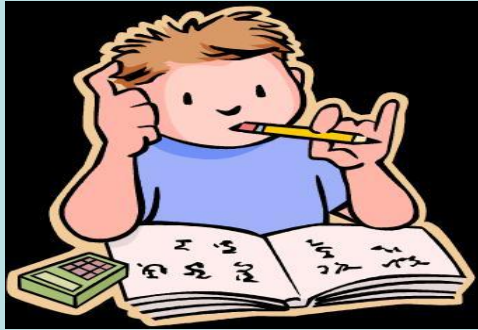
Reading at home





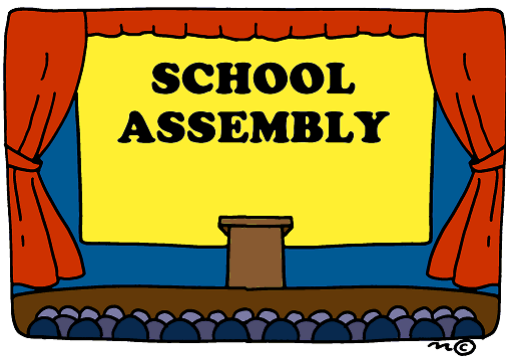
Topic

- *Creative curriculum
- *Connections are not forced but used to enhance learning. Children to make links between subjects and see how they relate to real life situations.
- *We are happy for and would encourage the children to bring in related books or resources for the topics, however, please do ensure that they are named so that we can return them at the end of the topic.
- *Year 2 children will get a homework project related to their topic each term.



HOMework

- Literacy homework- 'Talk to write' will be set on a **Friday** and will be due in on **Monday**.
- Spelling homework will also be given out on a Friday and is due in on a Monday (spelling test on Fridays).
- Maths homework-Friday and will be due back in on a **Friday**.
- There will be a homework tray for the children to put their work in.



Assemblies



- **Monday:** Whole school assembly.
- **Tuesday:** Class devotion time.
- **Wednesday:** Whole school assembly
- **Thursday:** Class assembly
- **Friday:** Alternate weeks: -
- **Celebration Assembly**
- **Care and share assembly** where a class share what they have been doing with the school. You will be welcome to come and join us for your child's assembly. Dates to be confirmed!

How you can help us

- Readers - See individual teachers for suitable times and days. Please come and sign up!
- Special skills/resources to share that relate to any Topic.
- Check Website (to be updated shortly) and the whiteboard outside regularly for updated information

Question Time!



Thank

you